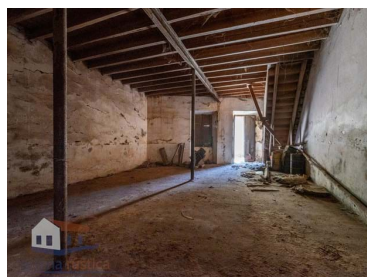




Cercal - Building



108

Area (m²)



54

Land Area (m²)



90 000 €

(EUR €)

Stone building in the center of Cercal do Alentejo

Welcome to the unique opportunity to acquire a magnificent two-storey stone building for rehabilitation located in the picturesque Cercal do Alentejo.

This quaint property offers a perfect blend of rustic charm and elegance, representing an unparalleled opportunity for those looking to invest in an authentic piece of local architecture.

Key features:

Traditional Architecture:

This stone building displays a traditional Alentejo architecture, standing out for the robustness of its stone walls that give a feeling of solidity and authenticity.

Privileged Location:



Maria Madeira

+351 963 729 802 ²

geral@arteriarustica.com

T +351 963 729 802 ² · E geral@arteriarustica.com
Rua Poeta António Aleixo 28 loja 15, 7520-171 Sines
AMI 22936

¹ (Call to national fixed network) | ² (Call to national mobile network)



Strategically located in the heart of Cercal do Alentejo, the property benefits from convenient proximity to local amenities such as restaurants, shops, and services, providing a truly community-integrated living experience.

Versatile Interior Spaces:

With a versatile arrangement of interior spaces, the building allows easy adaptation to various uses, from housing to potential commercial space or even transformation into local accommodation.

Authentic Details:

The property preserves authentic details, providing a unique and charming atmosphere.

Investment Potential:

This stone building for rehabilitation not only offers a charming residence, but also represents a solid investment opportunity in the Alentejo real estate market.

If you are looking for a property with character, history and potential for appreciation, this is the ideal choice.

Don't miss the opportunity to own a piece of the rich architectural heritage of Cercal do Alentejo.

Schedule a visit and discover the unique potential of this stone property for rehabilitation, where the past meets the present in a harmonious way.

Property Features

- Proximity: Shopping, City, Open field, Pharmacy, Public Transport, Schools
- Floors: 2
- Main drainage
- Energetic certification: Exempt
- Built year: 1938
- Views: City view
- Quiet Location
- Mains water



Maria Madeira

+351 963 729 802 ²

geral@arteriarustica.com

T +351 963 729 802 ² · E geral@arteriarustica.com
Rua Poeta António Aleixo 28 loja 15, 7520-171 Sines
AMI 22936

¹ (Call to national fixed network) | ² (Call to national mobile network)